



SERV' INSTRUMENTATION

Mesure et Contrôle vos fluides
 ZI Broteau Nord
 69540 Irigny
 TEL 33 (0)4 78 51 47 50
 FAX 33 (0)4 78 51 59 96
<http://www.servinstrumentation.fr>



The **Master-Touch Flow Averaging Tubes (FAT™)** give a stable flow signal in applications where the flow profile is less than ideal, such as downstream of a bend, valve, tee or obstruction. The flow averaging tube has a number of large diameter (0.125") inlet ports along the length of the upstream impact surface. The impact pressure at each inlet port is averaged inside the tube to create the axial flow through the tube and across our flow sensor. The gas flow then passes back into the main flow stream through the gas return ports located near the flow sensing elements. Inline style FAT flowmeters can reduce the upstream requirements to as little as three diameters.

Series 9700MP

Series 9700MP flow averaging tubes are designed for installation in hazardous surrounding environments. Series 9700MP instruments have all of the electronics located in a double-sided enclosure mounted on the averaging tube assembly.

U. S. Patent No. 6,883,389 Other U.S. & foreign patents pending.

Specifications

Linear signal output	0–5 VDC & 4–20 mA
Signal Interface	RS232 & RS485
Accuracy, including linearity (Ref.: 21°C)*	±[1% of Reading + (0.5% + .05%/°C of Full Scale)]
Repeatability	±0.2% of Full Scale
Sensor response time	1 second
Turn down ratio	100:1 minimum
Electronics temperature range.....	0°–50°C (32°–122°F), extended temperature optional
Gas temperature range*	-40°–200°C (-40°–392°F), extended range available
Gas pressure effect.....	Negligible over ± 20% of absolute calibration pressure
Pressure rating maximum	500 PSI Std., > 500 PSI special
Input power requirement	24VDC @ 250mA 115 VAC 50/60 Hz optional 230 VAC 50/60 Hz optional
Flow Transmitter power requirements	5 watts maximum
Wetted materials	316 Stainless Steel (Hastelloy and Monel optional)
Standard temperature & pressure (STP)	70°F & 29.92" Hg (Air .075 lb./cubic foot)
NIST traceable calibration	Standard

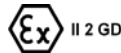
Flow Transmitter enclosure:

Class I Division 1 Groups B, C and D; Class II E, F and G; Class III; Type 4X, 7; Ex d IIC; AEx d IIC, IP66; EEx d IIC, IP66; T2 (consult factory for T3 or T4).

Certified to US requirements; Certified to Canadian requirements



Certified to European ATEX requirements

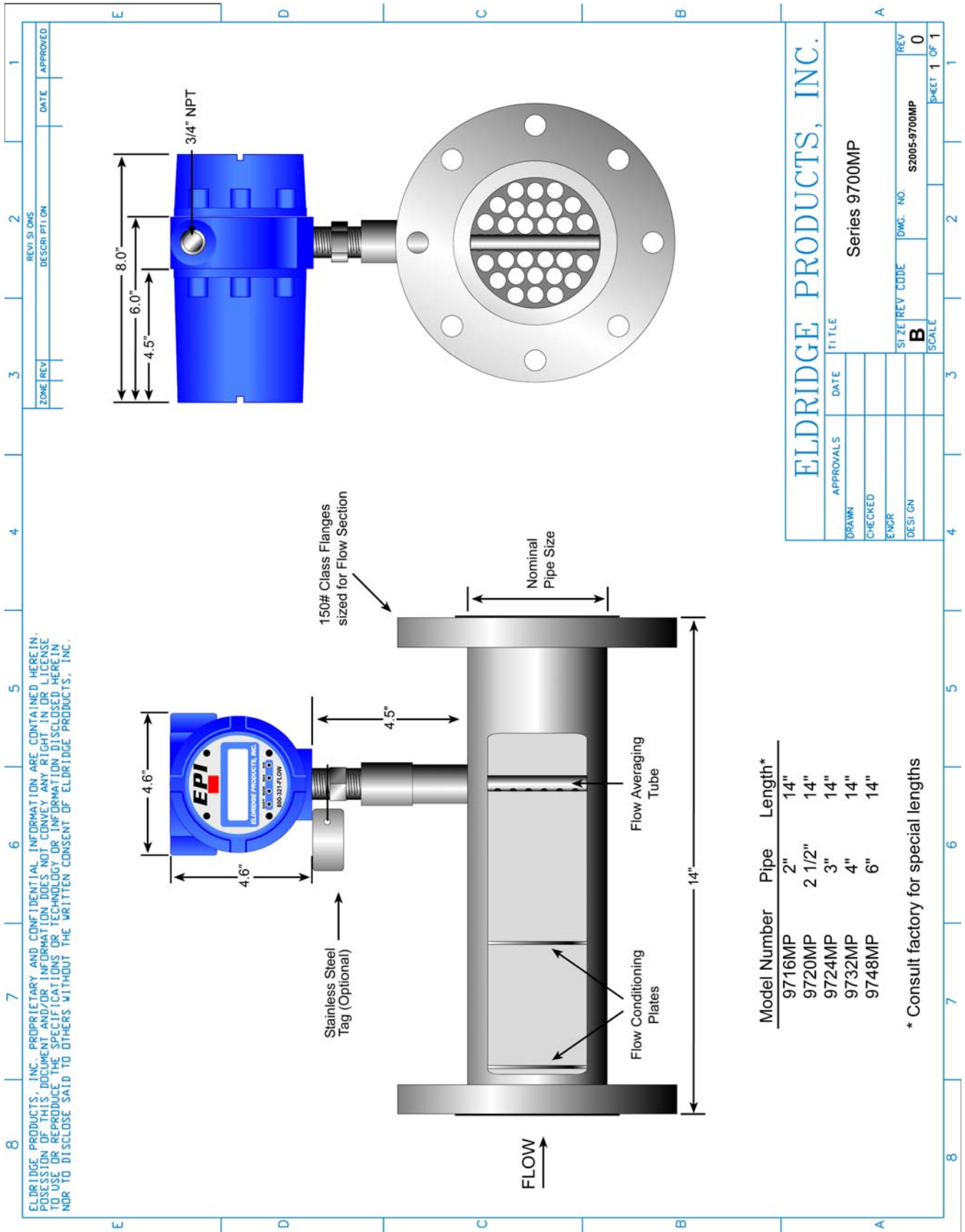


KEMA 04 ATEX 2276

* The accuracy specification applies to the instrument only. EPI is not responsible for measurement errors due to flow profile irregularities caused by installation piping configurations, corrosion on inner pipe surfaces, valve placement, etc.

**SSM option required for 100°–200°C (212°–392°F)

Specifications subject to change without notice.



ZONE	REV	REVISIONS	DATE	APPROVED

ELDRIDGE PRODUCTS, INC.		Series 9700MP	
APPROVALS	DATE	TITLE	
DRAWN			
CHECKED			
ENGR			
DESIGN			
SIZE	REV CODE	DWG. NO.	REV
B		S2005-9700MP	0
SCALE			SHEET 1 OF 1